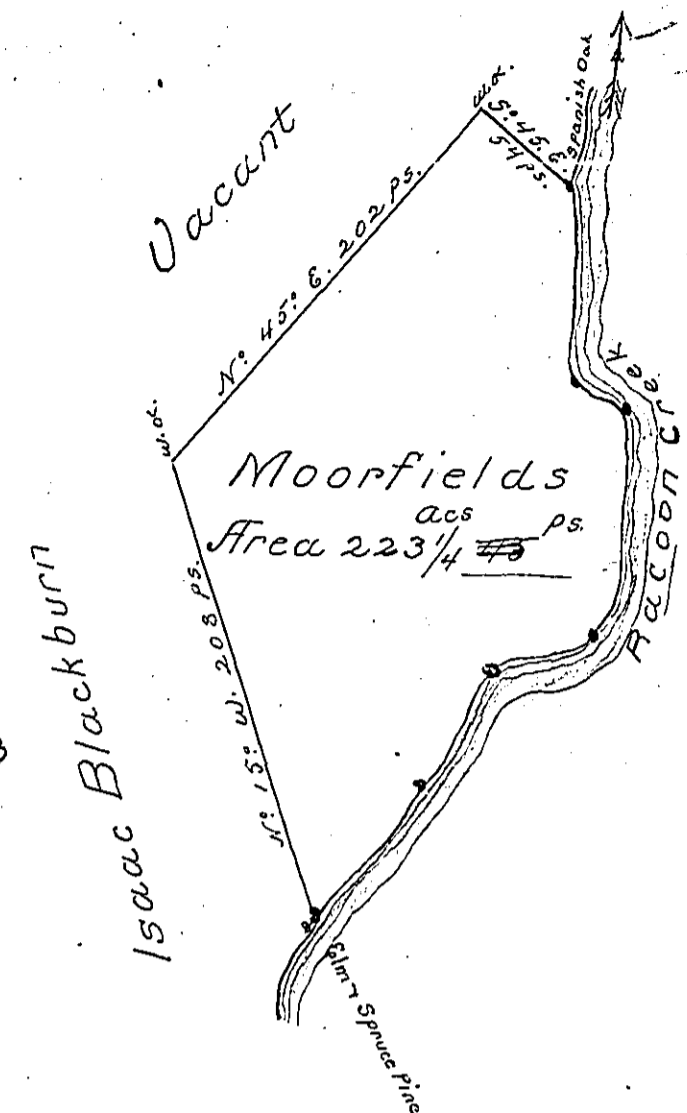


✓ 85  
P-24-149  
3-32

C-8-213



Courses up the Ck. from  
ye Spanish Cr.  
 S. 3° W. 89 ps.  
 \* S. 13° W. 99 Do.  
 S. 75° W. 41 Do.  
 S. 34° W. 54 Do.  
 S. 43° W. 78 Do.  
 to ye Elm & Spruce Pine

— \* S. 70. E. 23 1/2  
 384 1/2 ps.

A Draught of a Survey lying on Raccoon  
 Creek in Washington County call'd Moor-  
 fields containing 223 acs. & 45 per. with the usual allowce.  
 executed the 29th. Octr. 1785 in pursuance of a Warrant  
 from Phila. for 325 acs. in the Name of Jno. Wright  
 dated March <sup>30</sup> 3<sup>rd</sup> 1785.

Presley Nevill Dep. Sur.

John Lukens Esqr. }  
 Survr. Genl. }

IN TESTIMONY that the above is a copy of the original remaining on file in  
 the Department of Internal Affairs of Pennsylvania, made  
 conformably to an Act of Assembly approved the 16th day of  
 February, 1833, I have hereunto set my Hand and caused  
 the Seal of said Department to be affixed at Harrisburg,  
 this second day of April 1901

*James W. Lewis*  
 Secretary of Internal Affairs.